

Scrutiny Action Log

Name of Committee: **Children and Education Scrutiny Sub-Committee**

Municipal Year: **2023-24**

Reference	Action	Assigned to	Scrutiny Lead	Due Date	Response
Insert date	Insert agenda item title and the action requested by the committee	Insert name of director	Insert scrutiny lead	Insert Date	Response provided by the service/ witness
11.07.23	Provide further data and information on Care Experience	James Thomas Corporate Director for Children & Culture	Cllr Bodrul Choudhury CESSC Chair	08.08.23	Email sent on 09.08.23 with links providing further information included in Appendix 1.
	The Chair requested details on all local universities' contributions to the borough in regard to the S106 Planning obligations and gave an open invitation to attend a sub-committee meeting to discuss	Anna Murphy Senior Strategy & Policy Officer	Cllr Bodrul Choudhury CESSC Chair		I've run a quick search on both CIL and S106 records and it looks like there is only one development that shows up. Application PA/14/01852 relates to Queen Mary University and secured just over £38k in S106 financial contributions and several in-kind obligations relating to local employment opportunities. Unfortunately, we don't appear to have received the contributions and its unclear whether or not the planning permission was in fact implemented. My team is looking into this at the moment. Further information included in Appendix 2.
12.10.23	Clarify the timescales for the completion of the research report on free schools' meals carried out by Queen Mary University	Anna Murphy Senior Strategy & Policy Officer	Cllr Bodrul Choudhury CESSC Chair	10.11.23	Further information included in Appendix 3.

Scrutiny Action Log

	Provide school attendance data for Tower Hamlets	Layla Richards Head of Strategy and Commissioning	Cllr Bodrul Choudhury CESSC Chair	10.11.23	Further information included in Appendix 4.
	Research and provide any available data on the link between overcrowding, mental health and attendance.	Layla Richards Head of Strategy and Commissioning	Cllr Bodrul Choudhury CESSC Chair	10.11.23	Further information included in Appendix 5.
	Provide further data on Youth Service uptake including: - Breakdown of new contacts - Gender split in participants	Kelly Duggan Head of Youth Justice Service	Cllr Bodrul Choudhury CESSC Chair	10.11.23	Further information included in Appendix 6.
	Provide a breakdown of the Equalities monitoring data for employees of the youth service, esp. gender	Kelly Duggan Head of Youth Justice Service	Cllr Bodrul Choudhury CESSC Chair	10.11.23	Further information included in Appendix 7.
07.12.23	A written brief on free school meal deals, including the type of options available and costs per meal to be brought to sub-committee members for review.	Jenny Pittam Head of Contract Services	Cllr Bodrul Choudhury CESSC Chair	30.01.24	Further information included in Appendix 8.
	Further details on young people with EHCP no longer studying BTEC Courses to be brought back to the sub-committee for review.	Tina Sode Head of Special Education Needs	Cllr Bodrul Choudhury CESSC Chair	30.01.24	Further information included in Appendix 9.
	Details on the numbers of young people who are NEET including those on remand to be brought back to the sub-committee for review.	Lisa Fraser Acting Corporate Director Childrens Services	Cllr Bodrul Choudhury CESSC Chair	30.01.24	Further information included in Appendix 10.
	A written brief on details and numbers on the Post 16 needs list to be brought back to the sub-committee for review.	Lisa Fraser	Cllr Bodrul Choudhury	30.01.24	Further information included in Appendix 11.

Scrutiny Action Log

		Acting Corporate Director Childrens Services	CESSC Chair		
	Details on speech and language therapy provision in conjunction with BARTS will be brought to the sub-committee for review.	Lisa Fraser Acting Corporate Director Childrens Services	Cllr Bodrul Choudhury CESSC Chair	30.01.24	Further information included in Appendix 12.
08.02.24	A written brief on uptake figures for Free School Meals to be submitted to the sub-committee for review.	Somen Banerjee Director of Public Health	Cllr Bodrul Choudhury CESSC Chair	30.04.24	Further information included in Appendix 13.
	Share a brief on spice in Vapes and our work on this	Somen Banerjee Director of Public Health	Cllr Bodrul Choudhury CESSC Chair	30.04.24	Further information included in Appendix 14.
	Provide written evaluation of services including Safe East, Healthy Lives and THEWS	Somen Banerjee Director of Public Health	Cllr Bodrul Choudhury CESSC Chair	30.04.24	Circulated to Members via Email as Evaluations included commercially sensitive information. The Healthy Lives Evaluation has not been completed yet and will be brought back to CESSC in 3 months' time.
	Following the updated JSNA you have agreed to share an update on what has and hasn't worked in terms of your work on Childrens Health in the last year.	Somen Banerjee Director of Public Health	Cllr Bodrul Choudhury CESSC Chair	30.04.24	Action To Follow The updated JSNA is incorporated into the Annual Public Health Report and will be shared at a later date when it is ready to be published. The due date for this response does not align with Public Health's end-of-year review and it has been requested that this information is shared at a later stage.
	A written brief on how parents' complaints in specific schools were resolved and how the council engaged with parents and community groups to discussed outside of this meeting	Lisa Fraser Director of Education	Cllr Bodrul Choudhury CESSC Chair	30.04.24	Further information included in Appendix 15.

Scrutiny Action Log

	<p>Has the TH lead members made an active effort to liaise with the local representative organisations (such as the THPA and Muslim Parent Group) to address the concerns that have been raised by parents in relation to specific aspects of the RHSE curriculum e.g. naming of sexual body parts and menstruation at early years, LGBT content, sex education etc. If so, please provide some evidence of such engagement to address genuine concerns of the community.</p>	<p>Lisa Fraser Director of Education</p>	<p>Cllr Bodrul Choudhury CESSC Chair</p>	<p>30.04.24</p>	<p>Further information included in Appendix 16.</p>
	<p>Has the TH Guidance considered the cultural and religious sensitivity that exists in the community in relation to some of the contentious aspects of the RHSE curriculum. I note that religion is also a protected characteristic under the equality act 2010.</p>	<p>Lisa Fraser Director of Education</p>	<p>Cllr Bodrul Choudhury CESSC Chair</p>	<p>30.04.24</p>	<p>Further information included in Appendix 17.</p>
	<p>How was the TH Policy drafted? Was there any meaningful engagement with community stakeholders such as school leadership team, governors, parents and local community and faith organisation to ensure the DfE Guidance was adhered to, factoring in local demographic and religious sensitivity etc. Please provide any evidence of such engagements.</p>	<p>Lisa Fraser Director of Education</p>	<p>Cllr Bodrul Choudhury CESSC Chair</p>	<p>30.04.24</p>	<p>Further information included in Appendix 18.</p>
	<p>Has the TH lead team members made any effort to investigate some of the local protests that were organised by parents in some primary and secondary schools. Was there a role for the council to work closely with school and parent bodies</p>	<p>Lisa Fraser Director of Education</p>	<p>Cllr Bodrul Choudhury CESSC Chair</p>	<p>30.04.24</p>	<p>Further information included in Appendix 19.</p>
	<p>A breakdown on the PFI charges for all borough schools to be presented to the sub-committee for review including overview of the risks of</p>	<p>Lisa Fraser Director of Education</p>	<p>Cllr Bodrul Choudhury CESSC Chair</p>	<p>30.04.24</p>	<p>Further information included in Appendix 20.</p>

Scrutiny Action Log

	insufficient knowledge and funding you have highlighted				
	A brief overview of the PFI value for money findings, difference between schools, contract terms and council limitations to be presented to the sub-committee for review	Lisa Fraser Director of Education	Cllr Bodrul Choudhury CESSC Chair	30.04.24	Further information included in Appendix 21.
09.05.24	Provide a written response on why the percentage of members aged under 15 dropped from 27% to 24% against a target of 25% in 2022. Highlight whether this has increased since.	Simon Jones Head of Leisure Operations	Cllr Bodrul Choudhury CESSC Chair	02.07.24	Further information included in Appendix 22.
	Provide a written update on the two Tower Hamlets Women's and Girls Sports and Physical Activity Collective Networks meeting and the impact it has had in engaging women and girls on their needs for accessing sport provision in the borough.	Simon Jones Head of Leisure Operations	Cllr Bodrul Choudhury CESSC Chair	02.07.24	Further information included in Appendix 23.
	Provide a brief overview of the percentage of female leisure centre members.	Simon Jones Head of Leisure Operations	Cllr Bodrul Choudhury CESSC Chair	02.07.24	Further information included in Appendix 24.
	Provide a written response on the work undertaken to tailor services to meet the needs of boys, Asian, Bangladeshi, and Black students.	Dr. Tina Sode Head of Special Education Needs	Cllr Bodrul Choudhury CESSC Chair	02.07.24	Further information included in Appendix 25.
	Share the JSNA on SEND with the Committee upon its completion.	Dr. Tina Sode Head of Special Education Needs	Cllr Bodrul Choudhury CESSC Chair	02.07.24	The JSNA has been delayed and is unlikely to be ready until the Autumn.
	Provide data and dashboard on peer-to-peer harm, with a particular focus on sexual assault and harassment in schools.	Layla Richards Director of Commissioning and Culture	Cllr Bodrul Choudhury CESSC Chair	02.07.24	The Tower Hamlets Safeguarding Children Partnership (THSCP) has a priority on peer-to-peer harm. However, the THSCP does not currently have data on peer-to-peer harm.

Scrutiny Action Log

	Provide data on ethnicity for looked after children, those on plans, and those who go missing and identify any trends.	Layla Richards Director of Commissioning and Culture	Cllr Bodrul Choudhury CESSC Chair	02.07.24	Further information included in Appendix 26. The THSCP is currently undergoing a piece of work to change the dashboard and show more information around disproportionality and ethnicity. This work is in progress over the next few months.
--	--	--	---	----------	---

Appendix 1 – Care experience data and information

In response to the request for further data and information on care experience the service have provided the below links, the first two links will be particularly relevant for those of you who were not members of the sub-committee last year:

1. The independent review of children's social care
<https://webarchive.nationalarchives.gov.uk/ukgwa/20230308122449/https://childrensocialcare.independent-review.uk/final-report/>
2. Stable homes built on love consultation – the government response to independent review
<https://www.gov.uk/government/consultations/childrens-social-care-stable-homes-built-on-love>
3. Care experience matters
<https://www.gov.uk/government/publications/care-experience-matters>

Appendix 2 – Universities contribution S106 and CIL

Attached is a spreadsheet summarising the planning applications relating to universities that I've identified and any financial and non-financial obligations that were secured. Regarding CIL, none of the schemes on the list paid any CIL – mostly because the developments all relate to educational type uses which is charged at £0.



University S106
Benefits.xlsx

Appendix 3 – Free School Meal Research Report

[Tower Hamlets Universal Free School Meal Policy Lived Experience Report](#)

Appendix 4 – School Attendance Data

Absence rates - autumn term: England, Inner London and Tower Hamlets between 2018/19 Autumn term and 2022/23 Autumn term

Area	Measure	2018/19 Autumn term	2019/20 Autumn term	2020/21 Autumn term	2021/22 Autumn term	2022/23 Autumn term
England	Overall absence rate	4.3%	4.9%	4.7%	6.9%	7.5%
	Percentage of persistent absentees (10% or more missed)	10.9%	13.1%	13.0%	23.5%	24.2%
Inner London	Overall absence rate	4.0%	4.5%	5.0%	6.0%	7.2%
	Percentage of persistent absentees (10% or more missed)	10.1%	11.8%	14.4%	19.0%	23.8%
Tower Hamlets	Overall absence rate	4.0%	4.6%	4.9%	5.5%	7.4%
	Percentage of persistent absentees (10% or more missed)	9.8%	12.0%	14.5%	17.0%	26.5%

(1) Total includes state-funded primary, secondary and special schools. Data for special schools is available from 2016/17 to present.

(2) The overall absence rate is the total number of sessions missed due to absence for all pupils as a percentage of the total number of possible sessions for all pupils. One session is equal to half a day.

(3) A pupil enrolment is identified as a persistent absentee if they miss 10% or more of their possible sessions.

Appendix 5 – Overcrowding affects children’s wellbeing, Finding solutions in Tower Hamlets



Overcrowding affects children's wellbeing



Finding solutions in Tower Hamlets

How many households are affected?

Commonly used indicators of overcrowding such as the 'bedroom standard' have various purposes, including to help prioritise and allocate housing for residents on the housing list. Using this criterion, **15.8%** of households in Tower Hamlets were estimated as living in overcrowded conditions in 2021 (see Figure 1).

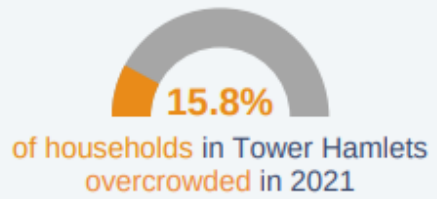


Figure 1: Percentage of households that met the overcrowding criteria as per 2021 census

About **half** of all responses to a survey of 620 families during the pandemic said they didn't have enough space. **Lack of space** is more prevalent for **low-income households** (see Figure 2).

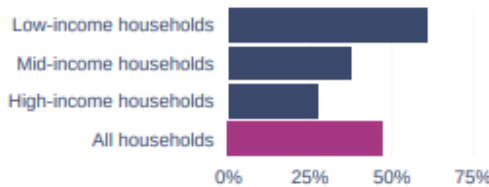


Figure 2: Percentage of households who reported not having enough space in their homes in a survey of 620 parents of children aged 0-4 and parents to be living in Tower Hamlets

"One of the biggest concerns in our area is overcrowding. And children just not having enough space for study, for play within their homes, that is a huge concern."
Tower Hamlets parent

Key research findings



The usual indicators of overcrowding miss many of the ways in which lack of space affects families and children.



Families experiencing overcrowding often face other issues with their homes.

Recommendations to improve residents' wellbeing



Policymakers could adopt **broader indicators** of overcrowding.



Landlords can provide space for **storage** and clothes drying, and **prioritise repairs**.



Planning rules can require child friendly, suitably sized **balconies** for new builds.

Underpinning evidence

The usual indicators of overcrowding miss many of the ways in which lack of space affects families and children

Overcrowding generates many impacts that are not accounted for with current indicators. The impacts mentioned by the participants in the survey are captured in Figure 3.

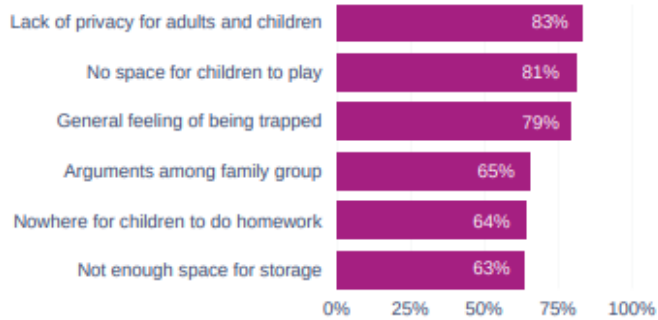


Figure 3: Impacts of lack of space, for respondents who reported this problem

Families experiencing overcrowding often face other issues with their homes

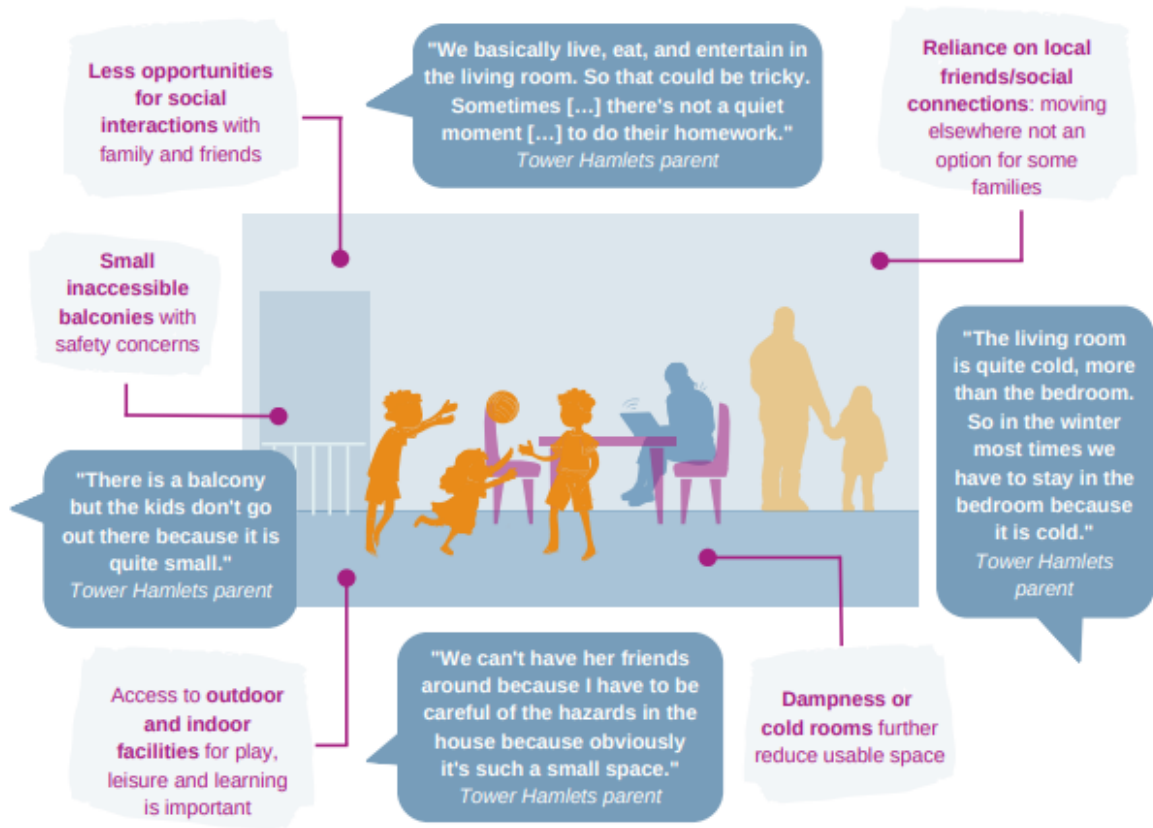


Figure 4: Overcrowding issues reported by parents

Underlying research



Cameron C, et al. "Housing and environment during the pandemic: Families in Tower Hamlets: A community survey and panel findings". <https://iris.ucl.ac.uk/iris/publication/20129>

About the study: Community survey that collected data on the experiences of families with young children, a women, who lived in Tower Hamlets during the COVID-19 pandemic. Most people completed the first survey and most (620) also completed a second survey. People were recruited via communication from the local authority targeting low-income households.



Ucci M, Ortegón-Sánchez A, Mead NE, et al. (2022) Exploring the Neighbourhood Environments for Enhanced Parental Well-being in Areas of High Child Poverty. *Environmental Research and Public Health*. doi.org/10.3390/ijerph191912563

About the study: Carried out in partnership with community groups to explore the experience of how housing and the local area affects the health and well-being of children aged 2–12 years old from two local authorities: Tower Hamlets in East London, and Bradford District in West Yorkshire. Data was collected from 13 interviews (and questionnaire data) with Tower Hamlets and Bromley by Bow, focusing on aspects related to child poverty. The themes emerging from the study.

This work was undertaken as part of ActEarly: A City Council-led initiative to make changes to improve the health and opportunities for children in areas of high child poverty; Bradford, West Yorkshire and Tower Hamlets. It is part of the UK Prevention Research Partnership, an initiative funded by local authorities, the Department of Health and Social Care (England), local government administrations, and leading health research charities.

Partners



<https://actearly.org.uk/>

For more information contact [redacted]

Associated Links (Appendix 5)

[IJERPH | Free Full-Text | Exploring the Interactions between Housing and Neighbourhood Environments for Enhanced Child Wellbeing: The Lived Experience of Parents Living in Areas of High Child Poverty in England, UK \(mdpi.com\)](#)

<https://actearly.org.uk/>

Appendix 6 – Breakdown of New Contacts with the Youth Service

That further data on Youth Service uptake, including a breakdown of new contacts and the gender split in participants, will be provided to the sub-committee for review.

	September	October	November	Total
Female	91	196	396	683
Male	131	302	1019	1452

The data above is in relation to the offer provided by Young Tower Hamlets

Appendix 7 – Breakdown of Gender Equalities Monitoring Data for Youth Service Employees

2. That a breakdown on equalities monitoring data for employees of the youth service, specifically gender to be provided to the sub-committee for review.

	Asian	Black	Mixed	Other	White
Female	9	12	0	1	7
Male	12	8	0	0	1

The data above is in relation to the staff in Young Tower Hamlets. This includes the current permanent staff as well as the interim project team.

Appendix 8 – UFSM School lunch and “Meal Deal” offers in Tower Hamlets Secondary Schools

UFSM School lunch and “Meal Deal” offers in Tower Hamlets Secondary Schools



- The Mayor funds £2.90 per day for a Secondary School UFSM
- This can be spent on a 2 -course lunch or “Meal Deal” at midday to include a main or vegetarian choice and will also include vegetables, salad options, bread & a dessert option.
- In schools with limited dining facilities, the UFSM allowance can also be spent on a “Meal Deal” at morning break – samples provided.
- All schools will have 1, 2 or 3 week menu offer – samples provided.
- The price the Catering Contractor charges the school for the meals will vary depending on individual Contract Terms and Conditions.





**Sample of a “Meal Deal”
offered by Accent
Catering who provide
meals at the following
schools**

**Mulberry Girls School
Mulberry Shoreditch
Mulberry UTC Canary Wharf College 3
(Crossharbour)
Bishop Challoner
Mulberry Stepney Green**



The best of London
in one borough



Sample of a “Meal Deal” at CGFS, Bow & Morpeth Schools provided by Olive Dining Catering Services



Meal Deal

1

HOT MAIN **OR** SANDWICH **OR** WRAP **OR** BAGUETTE

2

HOT DESSERT **OR** SMALL FRUIT POT **OR** PIECE OF FRUIT

LOOK OUT FOR THE PURPLE LABELS


*2 items for
£2.61*

The best of London
in one borough



Contract Catering Services UFSM offer at Swanlea School (Week 1) £2.90



 SWANLEA SCHOOL LUNCH MENU OCTOBER 2023	SWANLEA SCHOOL WEEK ONE				
	MON (Planet Earth Day)	TUE (Street Food)	WED (Traditional Day)	THU (Favourites)	FRI (World Food Day)
Main	Beef Keema Curry with Rice	Chicken & Sweetcorn Pie with Mashed Potato	Roast Beef & Potatoes with Yorkshire Pudding & Gravy	Crispy Battered Fish with Homemade Tartar Sauce & Chips	Thai Red Chicken Curry with Rice
Vegetarian	Tomato & Basil Pasta Bake	Margherita Pizza with Baked Potato Wedges	Chickpea & Vegetable Tagine with Couscous	Italian Quorn Meatballs with Cheese Mega Sub with Potato Wedges	Thai Stir-Fried Vegetables with Noodles
Slides/Vegetables	Sweetcorn & Peas	Broccoli and Carrots	Roasted Root Vegetables	Peas & Baked Beans	Vegetable Medley and Sweetcorn
Salads	Crated Carrots & Sultanas Salad	Cauliflower & Coriander Salad	Chef's House Salad	New Potato Salad / Sweetcorn Salad	Sweet Chill, Tomato & Basil Salad
Dessert	Cheese and Crackers with Grapes & Apple Wedge	Fruity Yoghurt Bar	Homemade Cheese Twist	Fruit Salad with Vanilla Ice Cream	Thai Baked Pineapple with Yoghurt
Daily Options	Daily Salad / Fresh Bread / Seasonal Fresh Fruit Platter / Organic Yoghurts				


Respect | Aspire | Achieve

The best of London in one borough



Contract Catering Services UFSM offer at Swanlea School (Week 1) £2.90



 SWANLEA SCHOOL LUNCH MENU OCTOBER 2023	SWANLEA SCHOOL WEEK TWO				
	MON (Planet Earth Day)	TUE (Street Food)	WED (Traditional Day)	THU (Favourites)	FRI (World Food Day)
Main	Caribbean Brown Chicken Stew with Rice	Curried Beef Meatballs with Savoury Rice	Roast Chicken & Potatoes with Yorkshire Pudding & Gravy	Breaded Fish with Homemade Tartar Sauce & Chips or Teriyaki Salmon Wrap with Mixed Side Salad	Beef Bourguignon with Rice
Vegetarian	Macaroni Double Cheese with Fried Leeks	Vegan Spicy Chicken Style Strips & Sweet Chilli Sauce Wrap with Baked Potato Wedges	Chickpea & Mixed Vegetable Spicy Rice	Jack Sweet Potato, Bean and Vegetable Curry with Rice	Spinach, Pepper & Caramelized Onion Quiche with Provencal Potato
Slides/Vegetables	Sauteed Leeks and Sweetcorn	Curried Roasted Cauliflower and Peas	Broccoli and Carrots	Peas and Baked Beans	Ratatouille and French Beans
Salads	Carrots & Cucumber Ribbons	Asian Noodle Salad	Chef's House Salad	Crunchy Coleslaw	Macedoine of Vegetable Salad
Dessert	Cheese and Crackers with Grapes & Apple Wedge	Fruity Yoghurt Bar	Apple Crumble Style Yoghurt	Fruit Salad with Vanilla Ice Cream	Yoghurt with Cinnamon & Vanilla Pear
Daily Options	Daily Salad / Fresh Bread / Seasonal Fresh Fruit Platter / Organic Yoghurts				

Respect | Aspire | Achieve

The best of London
in one borough



Accent Catering Sample Menu (Week 1)



Week 1 **Spring Menu**

Week Commencing:
08/01/2024,
05/02/2024
and
11/03/2024

	Mon	Tue	Wed	Thu	Fri
<p>MAINS <i>Fresh Flavours</i></p>	<p>Kung Pao Chicken Stir Fry with Peppers Served with Egg Noodles and Chinese Roasted Greens (G,So,E)</p>	<p>Chicken Tikka Masala Served with Turmeric Rice and Aromatic Cauliflower (None)</p>	<p>Mexican Chicken, Peppers and Beans Fajita Served with Mexican Wholegrain Rice and Sweetcorn (G,Mu,Mk,Ce)</p>	<p>Classic Italian Beef Lasagne Served with Garlic Bread and Green Beans (G,E,Mk,So)</p>	<p>Fish Finger Bap with Lemon Coleslaw (G,E,F,Mu) or Salmon Fishcakes with Lemon Mayo (G,E,F) Served with Beans and Peas</p>
<p>VEGGIE <i>(Meat free)</i></p>	<p>Kung Pao Quorn Stir Fry Served with Egg Noodles and Chinese Roasted Greens (G,Mu,So,Ce,E)</p>	<p>Veggie Chickpea Tikka Masala Served with Turmeric Rice and Aromatic Cauliflower (None)</p>	<p>Roast Veggie, Beans and Cheese Quesadilla Served with Mexican Wholegrain Rice and Sweetcorn (G,Mu,Mk,Ce)</p>	<p>Mediterranean Vegetables Lasagne Served with Garlic Bread and Green Beans (G,E,Mk,So)</p>	<p>Homemade Veggie Burger with Tomato Relish in a Toasted Bun (G,Su) Served with Beans and Peas</p>

JACKET POTATOES

MONDAY
Cheese and Beans topped Jacket Potato
(Mk)

TUESDAY
Tuna Mayonnaise topped Jacket Potato
(E,F)

WEDNESDAY
Cheesy Coleslaw topped Jacket Potato
(E,Mu)

THURSDAY
Chilli con Carne topped Jacket Potato
(None)

FRIDAY
Cheese and Beans topped Jacket Potato
(Mk)

DESSERT

MONDAY
Apple Crumble with Custard
(G,Mk)

TUESDAY
Fruity Flapjack
(G,Su)

WEDNESDAY
Baked Citrus Pudding with Lemon Sauce
(G,Mk,E)

THURSDAY
Banana Tea Bread
(G,Mk,E)

FRIDAY
Winter Fruit Crumble with Custard
(G,Mk)

Mulberry
Academy Shoreditch

At the heart of everything we do is our love of good, fresh and healthy food, prepared by a team who cares!

every day!
Look out for our
Salad Bar
Fresh every day packed with tasty choices!

MEAL DEAL
Check out what's on offer today!
Also available for Free School Meals

ALLERGENS
Speak to one of our chefs if you have any allergies or check on the daily menu template.
we're allergy aware!

The best of London
in one borough



Appendix 9 – Further details on young people with EHCP no longer studying BTEC Courses to be brought back to the sub-committee for review.

Data is not collected on the number of young people with EHC plans who initially enrolled on a BTEC course and later switched to another pathway due to the limited offer. However, we do know that BTECs often cater to diverse learning styles and abilities, providing a more practical and vocational approach for children and young people. By excluding BTEC qualifications (level 2 and below) from our 6th form offer, young people are limited in their educational choices, and their ability to thrive and excel in areas that align better with their individual strengths and preferences is hindered. A review of the current 6th form offer is in progress, and the outcome of this review will provide suggestions to address the concerns mentioned above.

Appendix 10 – Further details on young people with EHCP no longer studying BTEC Courses to be brought back to the sub-committee for review.

- At the start of the 23/24 academic year 130 young people (aged 17 to 25) fell under the NEET category. This has risen to 179 young people (January 2024).
- The NEET population is diverse in terms of age, with the following distribution:
 - 5 young people aged 17.
 - 15 young people aged 18.
 - 23 young people aged 19.
 - 42 young people aged 20.
 - 30 young people aged 21.
 - 26 young people aged 22.
 - 22 young people aged 23.
 - 14 young people aged 24.
 - 2 young people aged 25.
- 4 young people (aged 22-25) are currently servicing a custodial sentence.
- The highest number of NEET young people falls within the age group of 20.

- ASD is identified as the primary need for 22 young people who are NEET.
- SLCN is identified as the primary need for 37 young people who are NEET.
- The Preparing for Adulthood service team are:
 - further exploring targeted interventions for NEET young people with ASD and SLCN to address their unique needs and challenges.
 - working collaboratively with colleges and training providers to further develop and implement early intervention programs for younger NEET young people (17-18 years old) to prevent prolonged disengagement.
 - fostering collaboration between educational institutions, employers, and support services to create a seamless transition for NEET young people into education or employment.

Appendix 11 – Post 16 Needs

There are 1228 17- 25-year-olds with EHCPs in Tower Hamlets:

- **408** 17- and 18-year-olds
- **184** 19-year-olds
- **636** 20 – 25-year-olds

These young people attend a wide range of placements and access a variation of courses including A level qualifications and supported internships. However, only 79 are being educated in mainstream 6th forms in Tower Hamlets whilst 377 attend the local further education college (NCC). 156 young people are accessing the post 16 offer in our special schools (including Phoenix College) and 34 are educated out of borough. Work continues to reduce the number of young people being educated out of borough, but the needs of some young people are such that they need a level of care and education that cannot be provided in Tower Hamlets.

The needs of young people with SEN have been clearly articulated (via surveys, evaluation forms, face-to-face meetings, and presentations) by themselves and their parents and carers. A key area highlighted by young people and their families is communication. They want us to communicate better and have highlighted that accessibility to information about available services is crucial. They have expressed the desire to easily find information about what is on offer and gain a clear understanding of how the system operates. They feel that professionals should possess a comprehensive understanding of the system and the available support and be able to communicate this in a way that is

understandable for them. Young people were clear that they want to minimise the need to repeat their stories across different arenas. Parents and carers continue to request an increase in the availability of places for young people aged 16 and above, with a specific focus on Autism, Social, Emotional, and Mental Health, and Profound and Multiple Learning Difficulties. Young people with SEN would like access to leisure opportunities and youth clubs tailored to their needs. Young people with SEN and their families expressed a need for more support to develop social skills in young adults to facilitate their transition into adulthood, further and higher education, and employment. Parents shared that some of their young people with SEN are at risk of exploitation and would like support in keeping them safe. Young people said they want to be heard and feel that the council listens but does not always act.

Services are collaboratively working to develop a 'tell-us-once approach to SEN,' enhance communication, and improve information sharing by updating and refining the local offer, alongside hosting regular Let's Talk SEND events. The post-19 specialist offer is currently under review with the aim of expanding services for young people with Autism Spectrum Disorder and considering post-19 developments for those with Profound and Multiple Learning Difficulties. The Young People's Service and the Special Educational Needs Service are jointly developing youth sports and fitness sessions tailored for young people with SEN and exploring the introduction of Phab clubs in Tower Hamlets. New training providers, after assessment, have been added to the pool of organisations delivering life skills training to young people with SEN. There is an increased focus on creating new opportunities and providing additional support to ensure young people develop as much independence as possible, supporting their journey to adulthood.

Appendix 12 – Speech and Language Provision

- On average in Sep 2022 – Aug 2023, 92 referrals every month were received for children under 5 to SaLT, of which 58 were accepted on average each month.
- 2.0 FTE additional members of staff on fixed-term contracts and some temporary staff have been recruited to help reduce the waiting list for an initial contact with a therapist. The staffing has been in place since April 2023.
- There has been a reduction of numbers waiting from almost 500 in October 2022 down to 70 currently. The average wait time has reduced from a peak of 35 weeks to under 15 weeks.
- Bart's Health NHS are currently providing between 60 and 80 initial contacts every month which is enough to keep reducing the waiting list. Their current target is to reduce the average waiting time to below 10 weeks from referral.

- Referrals and Acceptances
 - On average, the Speech, and Language Therapy service received 92 referrals per month for children under 5 during Sep 2022 – Aug 2023,
 - Of these, an average of 58 referrals were accepted each month.
- Staffing Enhancement
 - To address the waiting list for initial therapist contact, 2.0 full-time equivalent additional staff on fixed-term contracts and temporary hires have been recruited.
 - The expanded staffing has been in operation since April 2023.
- Waiting List Reduction
 - There has been a significant reduction in the number of individuals on the waiting list, decreasing from nearly 500 in October 2022 to the current count of 70.
 - The average waiting time has also decreased substantially, dropping from a peak of 35 weeks to under 15 weeks.
- Bart's Health NHS Contributions
 - Bart's Health NHS is actively involved in providing between 60 and 80 initial contacts each month.
 - This level of service is instrumental in the continuous reduction of the waiting list.
 - The current target is to further reduce the average waiting time to below 10 weeks from the point of referral.

These developments indicate positive strides in addressing the demand for Speech and Language Therapy services, with a notable impact on reducing waiting times and enhancing accessibility for the referred children under the age of 5.

Appendix 13 – Uptake figures for Free School Meals

Uptake of Meals



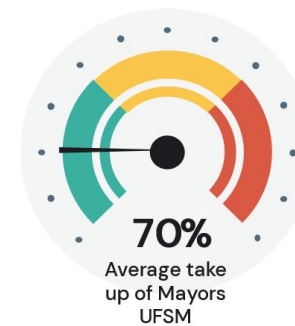
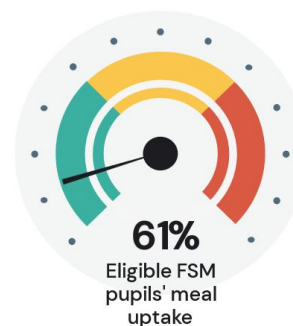
22/22

Eligible secondary schools receiving UFSM

16/16

Secondary schools received comprehensive equipment installations

Meal Take Up Performance (across all schools)



Images show a POD and on-going installation works to a kitchen.

Performance Summary

Across all schools there is an average meal take up rate of 70%.

There has been an upturn in eligible FSM pupils having a healthy meal up from 55% to 61% since September 2023.

Please note: Meal uptake across all schools in the borough has seen an uplift. However, this was undermined by data accuracy issues at five schools. Therefore, the abovementioned figures have excluded these schools from the analysis.

The best of London
in one borough



Appendix 14 – Written brief on Vaping – Action on vapes containing Spice

[Vaping CESSC briefing April 2024.docx](#)

Appendix 15 – Resolving parents’ concerns: Collaborative engagement with schools and community

If parents are unhappy about any aspect of the curriculum and complain to the school, then the school’s own complaints procedure needs to be adhered to. It is a matter for individual schools to deal with and address. Tower Hamlets schools have been advised by the Council to engage with parents, in line with the Department for Education recommendations that schools need to meet with parents to show resources, allow time for questions and to clarify how the topics will be taught in their school. After careful consideration, schools then make the final decision as to how topics will be taught at their school, with an awareness of what is best for their school community.

Source: [Relationships education, relationships and sex education \(RSE\) and health education: FAQs - GOV.UK \(www.gov.uk\)](#)

Appendix 16 – Engagement efforts with local representative organisations: Addressing concerns on RHSE Curriculum

Many meetings and discussions have been held with a wide range of Tower Hamlets groups and organisations, taking place over several years. Engagement with LBTH local representative organisations include: LBTH Heads Consultative; Children and Families Partnership Board; School Governing Bodies; LBTH RSE Steering Group which was set up by the previous Mayor and Lead Member and which included the Tower Hamlets Parents Association; separate meetings with the Tower Hamlets Parent Association; SACRE; LBTH branch of the National Association of Headteachers; the Maryam Centre; East London Mosque; LBTH Annual Parents Conference; Tower Hamlets Inter Faith Forum; the Mayor’s Advisory Board; the SENCO conference and the RSE stakeholders forum. A Council Officer also spoke to large numbers at the Somali Mosque at Whitechapel and the East London Mosque at specially convened meetings. The curriculum preferred by the East London Mosque was also sent out to all schools by the Council.

Appendix 17 - Cultural and religious sensitivity in RHSE Curriculum

Much thought and consideration was given to the different cultural and religious sensitivities within the Borough before developing the borough advice to schools around RSHE. The Council is aware of the cultural and religious sensitivities and has worked with the Mayor’s Advisory Group, Headteachers and local faith groups.

Appendix 18 – Drafting TH Policy: Stakeholder engagement and adherence to DfE guidance

The previous RSE Guidance from the Department for Education came out in 2019. Following this, many LBTH schools were unsure as to how to interpret and teach certain sections, especially the teaching of the body parts and same sex families in primary schools. Headteachers asked the Local Authority for advice and guidance. The advice developed was supported by Borough Safeguarding Leads and Medical Leads. Again, engagement with LBTH local representative organisations included: LBTH Heads Consultative, Children and Families Partnership Board, School Governing Bodies, LBTH RSE Steering Group which included the Tower Hamlets Parents Association, SACRE, LBTH branch of the National

Association of Headteachers, Maryam Centre, East London Mosque, Annual Parents Conference, Tower Hamlets Inter Faith Forum, Mayor's Advisory Board, SENCO conference, RSE stakeholders Group.

Appendix 19 – Local protests RHSE Curriculum

The Council is committed to supporting schools and our local community in order to give children the best start in life. The Council has worked closely with parents and schools, where there have been differing views, and has helped to ensure that due process has been followed through schools' individual complaints procedures, if necessary.

Appendix 20 – Breakdown on PFI charges and overview of PFI Value for Money

A breakdown on the PFI charges for all borough schools to be presented to the sub-committee for review including overview of the risks of insufficient knowledge and funding you have highlighted:

[Children & Education Scrutiny \(Annual PFI Charge\)](#)

London Borough of Tower Hamlets - PFI Charges Report	
Report Year	2023/24
School	Ben Jonson
Current Year PFI Charge	£587,780.79
Previous Year PFI Charge	£576,119.86
Change in PFI Charge	£11,660.93
Build Up of Current Year PFI Charge	
Base Costs	£354,757.54
Pupil Numbers - Latest	591
Pupil Numbers - Previous	593
Change in Pupil Numbers	-2
DSG Subsidy	£203,385.16
Indexation Factor	14.00%
ACR's	(£3,523.88)
Deductions	(£19,162.15)
Comms Rebate	(£658.40)
BSF Charges	£0.00
Insurance	£0.00
Benchmarking	£4,682.71
3rd Party Income Credits (Mulberry only)	Not Applicable to Selected School
Utilities Excess (Mulberry only)	Not Applicable to Selected School
Additional Hours / Life Cycle (Mulberry only)	Not Applicable to Selected School
TOTAL CHECK	£587,780.79

Appendix 21- A brief overview of the PFI value for money findings, difference between schools, contract terms and council limitations to be presented to the sub-committee for review

[Children Education Scrutiny \(PFI Vs Budget\)](#)

Scrutiny Action Log

		2020-21			2021-22			2022-23			2023-24			
LAESTAB	School Name	Budget	PFI Charges	%	Budget	PFI charge	%	Budget	PFI charge	%	Budget	PFI charge	%	
2112043	Ben Jonson	3,647,423	365,396	10%	3,816,035	544,253	14%	3,869,110	576,751	15%	3,983,923	587,781	15%	1
2112056	Bonner	5,145,177	211,503	4%	5,341,624	337,865	6%	5,094,372	334,278	7%	5,091,593	351,372	7%	1
2114507	CFGS	9,508,282	1,186,574	12%	10,067,171	1,603,258	16%	10,218,669	1,657,475	16%	10,460,733	1,813,939	17%	1
2112159	Clara Grant	2,593,588	160,718	6%	2,704,529	280,791	10%	2,765,751	293,987	11%	2,792,259	334,043	12%	2
2112118	Columbia	2,394,469	202,503	8%	2,531,568	321,933	13%	2,544,297	340,631	13%	2,646,367	394,887	15%	2
2112281	Harbinger	1,712,122	183,452	11%	1,886,995	265,238	14%	1,819,749	281,503	15%	1,995,562	337,447	17%	3
2114105	Langdon Park	7,283,667	722,839	10%	7,799,706	1,112,280	14%	7,738,827	1,178,888	15%	7,910,118	1,355,851	17%	3
2112004	Lansbury Lawrence	2,622,828	359,144	14%	2,735,628	416,225	15%	2,790,964	445,929	16%	2,848,342	433,469	15%	-
2112397	Marion Richardson	2,540,168	203,468	8%	2,682,988	320,397	12%	2,723,872	348,364	13%	2,790,812	334,700	12%	-
2114242	Mulberry	8,704,844	842,983	10%	9,508,692	1,240,569	13%	9,898,054	1,384,149	14%	10,504,523	1,590,837	15%	2
2112001	Old Ford	3,722,673	351,973	9%	3,878,181	516,707	13%	3,859,772	538,376	14%	3,946,033	599,032	15%	2
2112446	Olga	2,245,439	408,721	18%	2,742,029	345,951	13%	3,189,113	403,005	13%	3,356,439	491,830	15%	2
2112908	Osmani	2,293,963	199,628	9%	2,502,350	296,331	12%	2,583,430	337,822	13%	2,708,025	395,883	15%	3
2114276	Stepney Green	7,107,018	1,041,641	15%	7,651,470	1,435,957	19%	8,021,223	1,568,498	20%	8,304,566	1,746,799	21%	2
2112499	Stepney Park (Redlands)	2,431,874	206,550	8%	4,629,278	281,573	6%	4,867,530	318,311	7%	4,752,779	364,961	8%	2
2112569	Stewart Headlam	1,834,437	129,880	7%	1,824,200	188,151	10%	1,828,891	195,525	11%	1,653,231	195,217	12%	2
2112828	Thomas Buxton Primary	2,478,197	202,575	8%	2,606,926	311,796	12%	2,624,864	332,553	13%	2,685,557	382,497	14%	2
2112623	Virginia	1,303,547	166,658	13%	1,362,940	228,089	17%	1,395,972	235,208	17%	1,422,930	283,680	20%	3
2112631	Wellington	2,461,568	227,932	9%	2,479,497	338,864	14%	2,556,424	355,772	14%	2,515,550	327,536	13%	1
		72,031,281	7,374,139	10%	78,751,805	10,386,227	13%	80,390,883	11,127,025	14%	82,369,340	12,321,760	15%	
	Childrens House													
	Columbia Market													
	Harry Roberts													
	Old Church													
	Phoenix													

Appendix 22 – Drop in the % of leisure service members aged 15 and under

It is difficult for the new leisure insourcing team to comment on historical access data as GLL did not provide information or comments alongside their equality's dashboard. However, we observe that prevalence of under 15 was 24% in 2018 and 2019 and then raised to 27% in 2021 before falling back to 24% in 2022. The team is not aware of any targeted initiatives at the time which could have led to an increase membership in 2021 except the lifting of the pandemic restriction and the drive to get children and young people active again following the COVID-19 lockdowns. It is also interesting to note that in 2022, the under 15 represent only 16.6% of our total population and so it is unclear why the indicative target was based on 25.7%.

Appendix 23 – Update on Tower Hamlets Women's and Girls Sports and Physical Activity Collective Network meetings

Prepared by: Pauline Stewart

The first W&G SPA Collective Network meeting to place 12 December '23 (Host by SPA, Street Games, Youth Sports Trust) attended by 32: LBTH (SPA, Public Health, Leisure Insourcing, Young People Service), Clubs, Sports Organisations, Schools, Community Groups that supports in the delivers W&G SPA & Wellbeing sessions within the borough.

This was an introduction meeting mainly discussion around resources i.e. what supports & needs (Partnership work, Venue's, Funding, Courses)

SPA lead on International Women Week Programme 4-10 March '24: A template was distributed to all to engage in the weeks programme offering event, activities, sessions inputting to the week programme, working in partnership, delivery, resources, marketing etc.

The impact was great we collaborated with over 20 partners to provide a larger program ended with International Womens Day community event at the townhall 9 March, organised & delivered by female providing local talent: Health & Wellbeing Sessions, Inspirational Speakers, Singers, Poets, Dancers, and women run business and Health & advice stalls attended by over 500.

The weeks programme engaging over 1200 women and girls who participated.

Second Meeting 12 March '24

An attempt made progress the conversation around partnership working between schools and community organisations, a basic start form was produced and circulated including details we discussed an immediate need to explore opportunities in the summer term with sport and physical activities the group can offer bring community organisations into your school into schools.

The database was shared back with the group before the school holidays in the hope that it will help planning for the next term.

There was also a discussion around the need for bid camps and funding support to sign up to receive StreetGames London Funding Flash.

Street Games (Changing Sport, Strengthening Communities, Transforming lives:

Us Girls Tower Hamlets & Hackey had an impact:

- 2800 Unique Opportunities for Women & Girls
- 5 Locally Trusted Organisations
- 100 young women & girls engaged.
- 28 new sessions offered at each LTO
- 10 staff/young leaders accessed training

Campaign to encourage Women & Girls participation – May - October 2023

Building on the success of the national “This Girl Can Campaign” from Sport England, Tower Hamlets developed a local digital campaign to inspire women and girls to participate in sports and physical activity, and to promote the range of activities available to them in the borough.

The campaign called “**Find your...**” was shaped by local women and girls to empower them to find their **place**, their **community**, their **friends** and their **fun** to improve their physical and wellbeing. The aim was to support support women to be active in ways that work for them, regardless of age, background or ability.

The campaign was launched in August 2023 and ran for 6 weeks as part of the Tower Hamlets Leisure Insourcing project. Digital outcomes and behaviour change were measured to assess impact.

The challenge:

Improving access to sport and physical activity and reducing the gender activity gap is a strategic priority for the council. However, our local data and intelligence shows that:

- Women (57,7%) are less likely to be active than men (65,5%) (*Adults Active Live Survey 2020-21*)
- Girls (26,7%) are less likely to be active than boys (37,5%) (*CYP Active Live Survey 2020-22*)

National data from the England Active Lives survey (2022-23) also shows that girls (26%) are less likely than boys (43%) to have a more positive attitude towards sport and physical activity.

Many factors can prevent women and girls to be as active as they would like to be, including fear of judgement, lack of confidence, lack of time, fear of safety etc.

By sharing a realistic vision of local women and girls enjoying exercise together within their own community, our “Find your...” campaign aimed to address some of those barriers by empowering them with the confidence to exercise on their own terms.

The Campaign outputs:

- Coordinated a photoshoot and videos of local women and girls using our leisure centres that reflects the diversity within our community.
- Updated the existing Women & Girls webpage on the council website to include the campaign narrative, opportunities for women and girls and useful signposting links.
- Ran paid adverts across Facebook, Instagram, Snapchat, and Google.
- Posted content natively on the council’s social media accounts, including case study videos.
- Shared articles in the residents’ e-newsletter, Headteachers’ Bulletin, staff newsletter and Members’ Bulletin.

The Campaign outcomes:

Digital outcomes

- The webpage gained **8k page views** and **487 returning visitors**. This demonstrates a **1k% increase in page views** compared to the same date range in the previous two months (16 Jun – 10 August 2023) before the campaign launched.
- Across all platforms, the paid adverts gained:
 - **1.5m impressions** (total number of times the adverts were shown)
 - **100k reach** (number of people to see the adverts – Facebook and Snapchat only)
 - **8k link clicks** (number of people that clicked through to the webpage)
 - **10.7k full video views** (Snapchat only)
- Native social media content gained **8.8k impressions**, 102 clicks and 81 engagements.

Behaviour change

- Data provided by Better (Tower Hamlets Leisure Provider at the time) shows that there was a steady increase in female participation from August onwards, following a slight decline in June/July:

Female Participation	Usage	Percentage
May	39662	43.07%

June	40997	35.57%
July	38663	32.05%
Aug	28552	38.26%
Sept	35903	39.08%
Oct	36088	41.07%
Total	219865	38.18%

The female membership base rose from 48% in Q1 (Apr-Jun), to 48.6% in Q2 (July-Sept).

There were no significant changes made to Better's Women Only programme during this period, nor was there any other increased awareness other than this campaign, which suggest that the trend can be attributed to the awareness campaign.

How is the new approach being sustained?

- The photos and videos of local women will be used as stock imagery across council campaigns - including leisure insourcing.
- The campaign will be run again in the future during specific periods (e.g. International Women's Week etc.) or to raise awareness and boost engagement of specific initiatives (e.g. new women and girls free swimming initiative).

Lessons learned:

Co-developed communication campaigns representing women and girls being active in a positive, realist and inclusive way is likely to have a positive impact on both engagement and physical activity levels.

Appendix 24 - % of female leisure members

GLL equalities dashboard shows that female memberships were consistently below target of 49,2% since 2019. However, for May 2024, new female members represent 51.85% which is green performance. A range of initiatives and activities including free swimming and targeted communication are being implemented within the new Be Well service to better support women and girls to be active.

Appendix 25 – Work undertaken to tailor services to meet the needs of boys, Asian, Bangladeshi, and Black students:

It is essential to clarify that, while there is no specific programme or initiative exclusively dedicated to boys, Asian, Bangladeshi, and Black students, substantial work is being done to comprehensively meet the educational and health needs of *all* children and young people with SEND.

Our approach to SEN provision is inclusive and holistic, ensuring that every child and young person receives the education and support they need, regardless of their background. All Education, Health, and Care plans are developed in collaboration with educators, parents, and healthcare professionals to ensure the provision of bespoke support. Additionally, feedback from young people with SEN, parents, and the community is invaluable in shaping our practices and ensuring that all children and young people with SEN receive the highest standard of care and education. Such feedback has been incorporated into our new SEN and Inclusion Strategy, which demonstrates our commitment to continuous improvement and the adaptation of our SEN services to meet the evolving needs of our diverse population.

Appendix 26 – Data on looked after children, those on plans, and those who go missing:

[Item 6b Q4 2023-24 THSCP Data - CSC \(2\)](#)